

# The T-Scan™ Novus™

The New Standard of Care in Digital Occlusal Analysis



## What is T-Scan™ ?

T-Scan is a digital occlusal analysis system consisting of a patented sensor, USB-based handle, and proprietary software. This tool reveals the level and timing of force on individual teeth and the stability of the patient's bite.

T-Scan's precise, actionable data gives you the ability to diagnose and treat occlusion accurately and with confidence.

## Features and Benefits



### Improve Efficiency

Save time and money by reducing repeat visits



### Improve Outcomes

Objective data enables more effective treatments and results



### Data Integration

Integrate with digital impressions and biometric data



### Patient Education

Easy to understand, visual data increases patient acceptance



### Digital Workflow

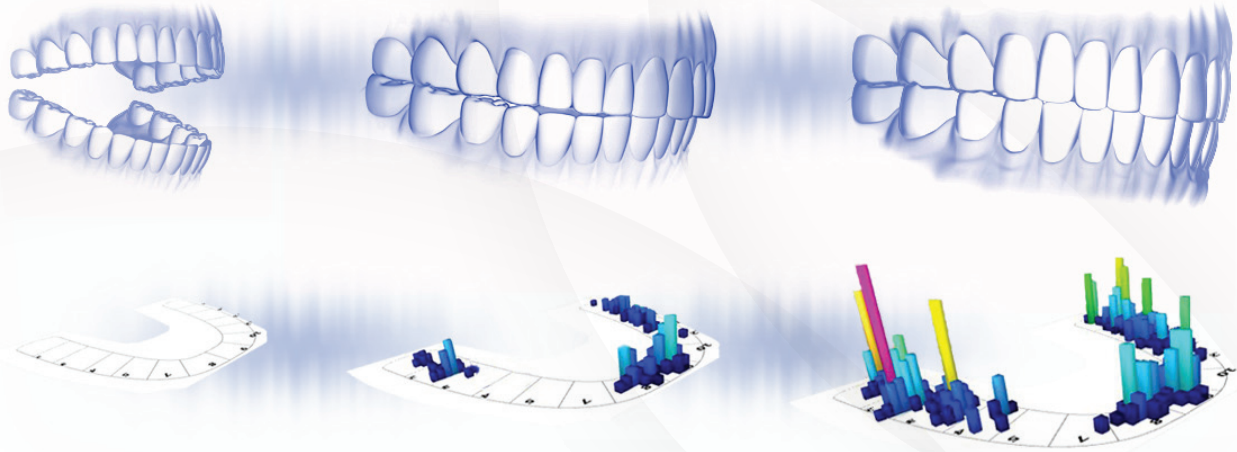
Speed up your workflow by going digital, and never leave your patient



### Differentiate Yourself

Broaden your treatment capabilities and grow your patient base

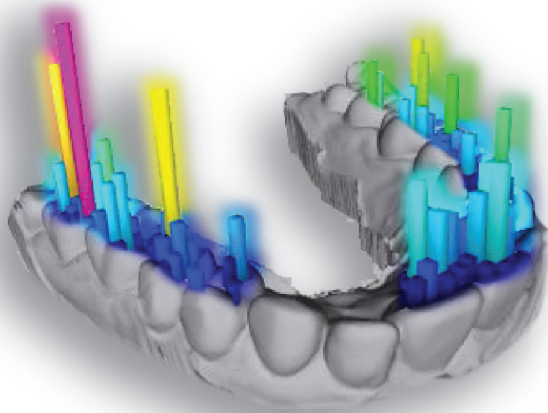
## How T-Scan Works



### **BITE. RECORD. SHOW AND TELL.**

When a patient bites down on the thin-film sensor, you will see live data showing the measured force and location of occlusion in their bite, as well as a recorded video of the bite process. T-Scan can be used to capture baseline data, as well as test the results of your chosen treatment. This information enables accurate analysis which can lead to more effective treatment outcomes.

## T-Scan Digital Workflow



### **First Consultation**

Use T-Scan to gather baseline occlusal data



### **Case Presentation & Acceptance**

Use data as a talking point about treatment plan



### **Provisionals**

Make sure temporary materials have no damaging forces or interferences



### **Treatment Finalization**

Test the form and function of the final restorations



### **Recall Maintenance**

Use T-Scan to ensure ideal occlusion over time

+1.617.464.4280

| 1.800.248.3669

| [info@tekscan.com](mailto:info@tekscan.com)

| [www.tekscan.com](http://www.tekscan.com)