



## SNAP-ON ABUTMENT SYSTEM

**The Snap-on Abutment System can be used in both anterior and posterior areas of the mouth for cement-retained single-unit crowns. The Snap-on Abutment is available in 4.0 and 5.5mm heights. Thanks to its profile design and Snap-on impression coping, the Snap-on Abutment System has been developed with ease-of-use in mind.**

The Snap-on Abutment System can be used as the final abutment at the time of implant placement, or can be provisionalized chairside using the Snap-on Temporary Cap. The Snap-on Abutment System possesses the concave emergence profile allowing for the formation of increased soft-tissue volume to ensure a natural-looking result. The Snap-on Abutment System is packaged with all the components necessary for the complete restorative procedure.

### SNAP-ON IMPRESSION COPING

The Snap-on Impression Coping snaps onto the abutment allowing the doctor to use a closed tray impression technique.

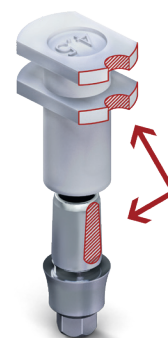
The Snap-on impression coping with its ease-of-use, allows for an accurate and quick impression.

### SNAP-ON TEMPORARY CAP

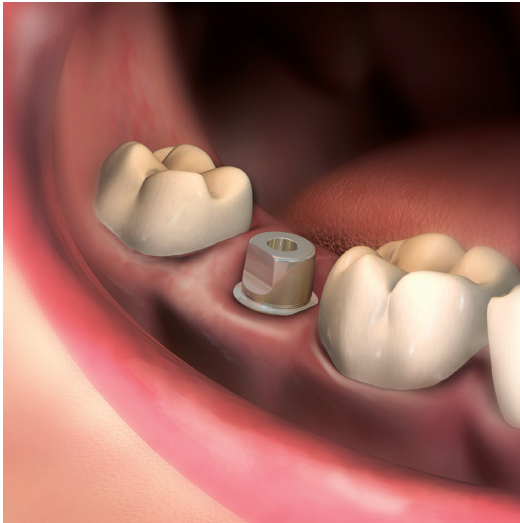
The Snap-on Temporary Cap is made from PEEK and can be used as a healing cap, or as a base for a temporary crown. A special retention mechanism allows the temporary cap to snap onto the abutment with no need for cement (this allows for ease-of-use during immediate loading, eliminating the risks of using cement during the procedure).

### SNAP-ON ANALOG

The Snap-on Analog securely snaps into the impression coping that is in the impression. The Analog may be scanned by an optical scanner in the laboratory for the manufacture of a CAD/CAM crown.

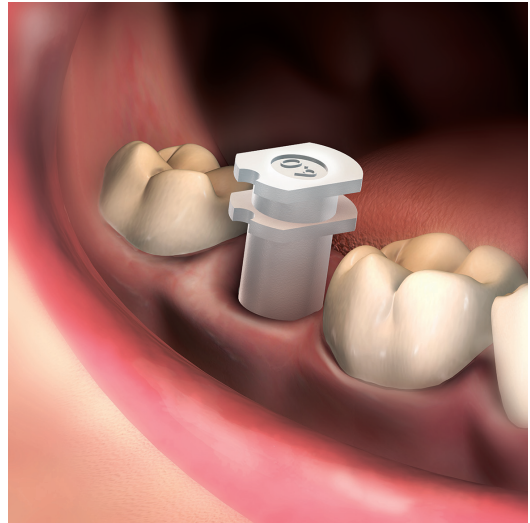


1



The abutment is placed into the implant and the retaining screw is torqued into place.

2



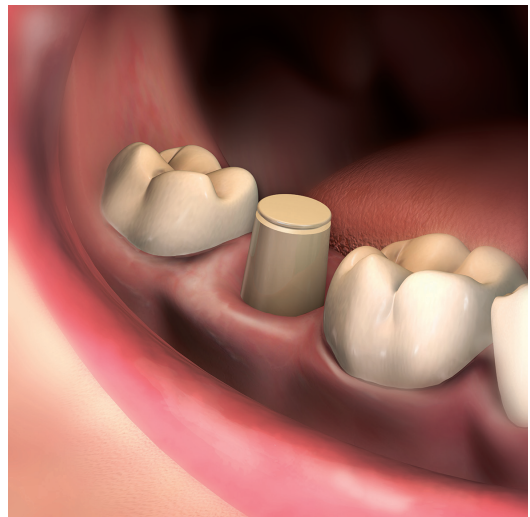
The Snap- on impression coping snaps onto the abutment.

3



The Snap- on impression coping is picked up in the impression with a close tray impression technique.

4



The Snap-on Temporary Cap is placed onto the Snap-on Abutment for the duration of the healing phase, or can be provisionalized with a temporary crown.

## INTERNAL HEX CONNECTION

NARROW PLATFORM			
Cat No.	∅ (mm)	L (mm)	H (mm)
44-70021	4.5	4.0	1
44-70022	4.5	4.0	2
44-70023	4.5	4.0	3
44-70024	4.5	4.0	4
44-70025	4.5	4.0	5
44-70026	4.5	5.5	1
44-70027	4.5	5.5	2
44-70028	4.5	5.5	3
44-70029	4.5	5.5	4
44-70030	4.5	5.5	5

STANDARD PLATFORM			
Cat No.	∅ (mm)	L (mm)	H (mm)
44-70001	4.5	4.0	1
44-70002	4.5	4.0	2
44-70003	4.5	4.0	3
44-70004	4.5	4.0	4
44-70005	4.5	4.0	5
44-70006	4.5	5.5	1
44-70007	4.5	5.5	2
44-70008	4.5	5.5	3
44-70009	4.5	5.5	4
44-70010	4.5	5.5	5
44-70011	6.0	4.0	1
44-70012	6.0	4.0	2
44-70013	6.0	4.0	3
44-70014	6.0	4.0	4
44-70015	6.0	4.0	5
44-70016	6.0	5.5	1
44-70017	6.0	5.5	2
44-70018	6.0	5.5	3
44-70019	6.0	5.5	4
44-70020	6.0	5.5	5

WIDE PLATFORM			
Cat No.	∅ (mm)	L (mm)	H (mm)
44-70041	6.0	4.0	1
44-70042	6.0	4.0	2
44-70043	6.0	4.0	3
44-70044	6.0	5.5	1
44-70045	6.0	5.5	2
44-70046	6.0	5.5	3

## CONICAL CONNECTION

CONICAL PLATFORM			
Cat No.	∅ (mm)	L (mm)	H (mm)
44-72441	4.5	4.0	1
44-72442	4.5	4.0	2
44-72443	4.5	4.0	3
44-72444	4.5	4.0	4
44-72445	4.5	4.0	5
44-72461	6.0	4.0	1
44-72462	6.0	4.0	2
44-72463	6.0	4.0	3
44-72464	6.0	4.0	4
44-72465	6.0	4.0	5

CONICAL PLATFORM			
Cat No.	∅ (mm)	L (mm)	H (mm)
44-72541	4.5	5.5	1
44-72542	4.5	5.5	2
44-72543	4.5	5.5	3
44-72544	4.5	5.5	4
44-72545	4.5	5.5	5
44-72561	6.0	5.5	1
44-72562	6.0	5.5	2
44-72563	6.0	5.5	3
44-72564	6.0	5.5	4
44-72565	6.0	5.5	5

## TORQUE

Screw Platform	Torque (N-cm)
SP / WP Abutment Screws	30-35
NP Abutment Screw	25-30
Conical Abutment Screw	25

### ATHENS

467 Mesogeion Ave.,  
Agia Paraskevi - 153.43  
Tel.: +30 210 80 30 341  
info@aristondental.com

Web: aristondental.com

### THESSALONIKI

13 Navarchou Kountouriotou str.,  
546.25  
Tel.: +30 2310 268 020  
thessaloniki@aristondental.com

fb: ariston dental

### LIMASSOL

9 Thessalonikis str.,  
Limassol - 3025  
Tel.: +357 25 322 895  
info@aristondental.com



**ariston dental**  
better answers